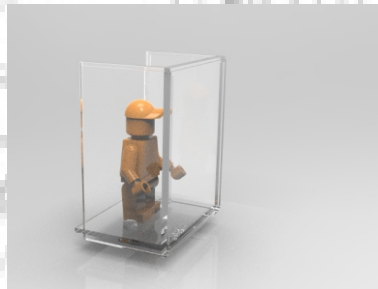




# FiguBox®

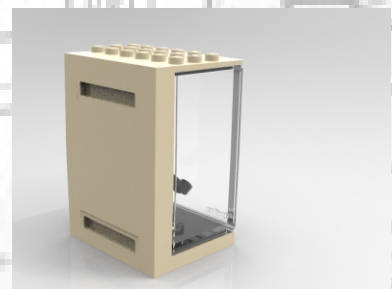
Why there is there no way to buy showcases for my LEGO® Minifig. combine convenient handling with stylish design?

If you've already asked this question, then you're at exactly the right place ...



Collect LEGO® Minifig is one thing. To stow and to present it adequately, is the other. Unfortunately in our view worldwide there is no proper solution for this problem.

Either these showcases are clunky or impractical. For this reason, we have realized our dream of a collective showcase, so that all our needs as passionate Minifig. collectors are realized. The reason that this ambitious project is now approaching to get reality fills our collector's heart with joy and pride. We hope many LEGO® Minifig. friends all over the world will be delighted by this innovative showcases. If you want to keep up to date with the current state of our FiguBox® sign up our EARLY BIRD NEWSLETTER. To be well informed; do not miss a thing.



## Design & Funktion

# FiguBox®



Inform yourself about the many functions and features the FiguBox® offers. Through the professional design of this display the showcase will fit to each setting. Feel free to construct your own way of showcases and be inspired by the variety of options.



## Selection of colors

We offer many different colours for FiguBox®. We produce from transparent to black. With the typical Lego colours your display will fit perfectly in your LEGO® visions.

## Design made in GERMANY

Of course we use only high quality materials for the Minifigures display cabinet, which will harm neither people nor our environment.

To us it is very important that anyone can see the love to detail in our product. It will be "German Quality" from the idea up to your door.



Design made in Germany



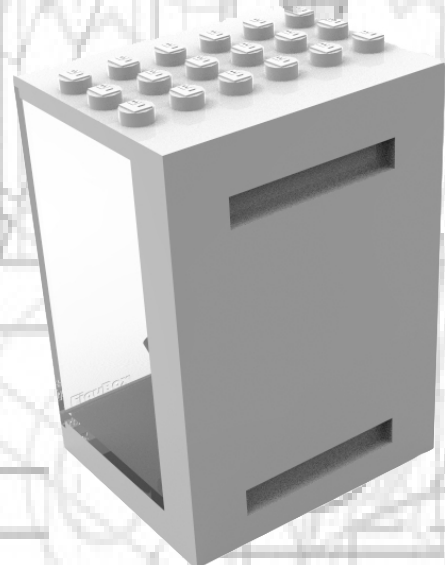
# FiguBox®

## 100% compatible

You can get very high with our FiguBoxes. Thanks to the excellent fit of their knobs to the surface, a strong connection is given to the cabinets, so you can build it up, just like Lego bricks.

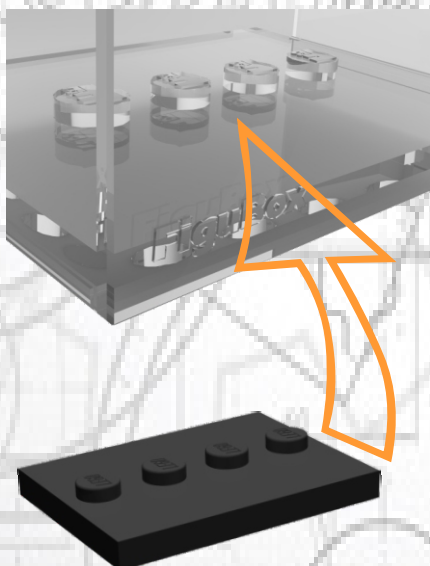
## ADAPTIVE WALLBRACKET for the showcases

Our Minifigures display showcase, has an adaptive wall mount. This makes it possible to fix the FiguBox® to a plate with pimples. Furthermore we offer a magnetic adapter to attach your FiguBox® to any magnetic object (e.g. fridge, metal plate, etc.).



## Figure bracket

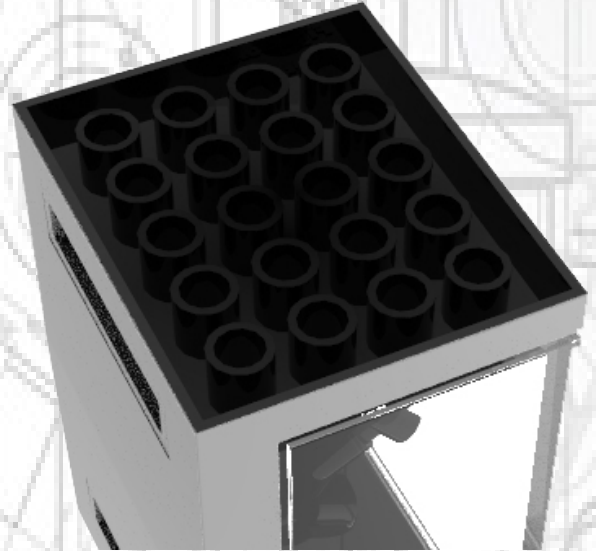
Inside the front cases are four 100% compatible knobs. After pulling out the front cases you can attach your Minifigures to the knobs. Even during transportation your Minifigure will stick to its place. You are able to click a LEGO® figures collection plate 3x4 in the case, too.



# FiguBox®

## Ground studs sleeves

On contrary to other Minifigure displays the FiguBox® has its own 100% compatible nubs sleeves in the underside of the bottom. This eliminates the purchase of a suitable base plate for your showcase.



## Front case

You can put the front case very easy into the introduce back case. Because of this a tilt, or damage to the Lego Minifigures display showcase is not possible. At a closed FiguBox® e.g. dust and nicotine cannot penetrate and pollute your precious content.

### CONTACT

#### GERMANY:



MAIL: [mail@figubox.com](mailto:mail@figubox.com)

FON : 05143 - 90 90 220

#### EUROPA:



MAIL: [vertrieb@figubox.com](mailto:vertrieb@figubox.com)

FON : 0761 - 69 67 62 43

#### WORLDWIDE:



MAIL: [vertrieb@figubox.com](mailto:vertrieb@figubox.com)

FON : 0761 - 69 67 62 43

